

Enfield's Blue & Green Strategy

Valuing our parks, open spaces, trees & waterways

Environment & Climate Change Forum

Wednesday 16 December
Philip Wadsworth
(Infrastructure Delivery Manager)



Why are we preparing a strategy?

- Update to Parks & Open Spaces Strategy (ends this year 2020) & Biodiversity Action Plan
- Covid-19 & climate change emergency response
- Use spaces to support community groups (e.g. friends of parks) & events (e.g. festivals)
- Growth agenda (e.g. evidence to support new Local Plan, DM decisions & project rationales)
- Multi-functional benefits (e.g. health & well-being)

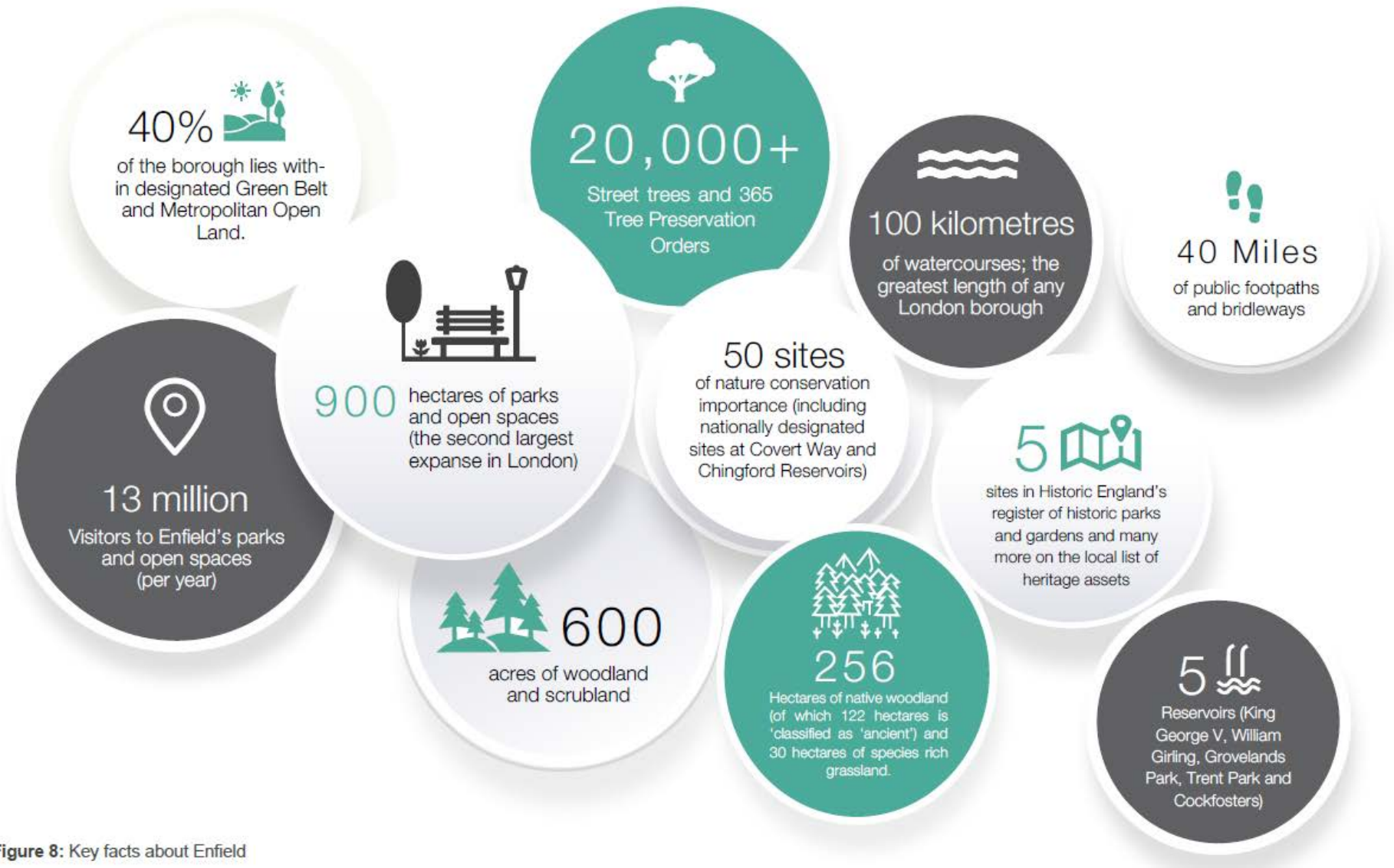


Figure 8: Key facts about Enfield



Blue & Green Strategy & Climate Action Plan

Challenges:

- Enfield's climate in 2050 will resemble Barcelona's climate now
- Significant wildlife loss - priority species face threat of extinction, especially amphibians (e.g. great crested newts) & migratory birds (e.g. bitterns).
- Exceedance of air quality limits (A10, A110 and A406)
- Increased flood risk (low-lying areas)

Response to threats:

- London & Enfield zero carbon targets (half of London will be green)
- Rewilding opportunities (endangered water voles, otters, stocks & goshocks)
- Carbon sequestration (300 ha of woodland in Enfield Chase will capture c3.9 tonnes of carbon per hectare per annum)
- New parks, areas of habitat & playspace
- Future proofing (extreme weather events)

Our approach to blue & green

Part 1: Strategy

- *Long term vision*
- *Aims & objectives*
- *Corridors of opportunity & nodes & spokes*
- *Strategic priorities & projects*
- *Delivery & implementation*

Part 2: Standards & requirements

- *Assessment of parks & open spaces*
- *Condition / status of wildlife sites & waterbodies*
- *Open space & accessibility standards*

Part 3: Action plan

- *Meet service & operational requirements (e.g. ongoing maintenance)*
- *Theme-based actions & targets*
- *Promote local ownership (e.g. events)*

Part 1: Strategy: Vision, aims & objectives

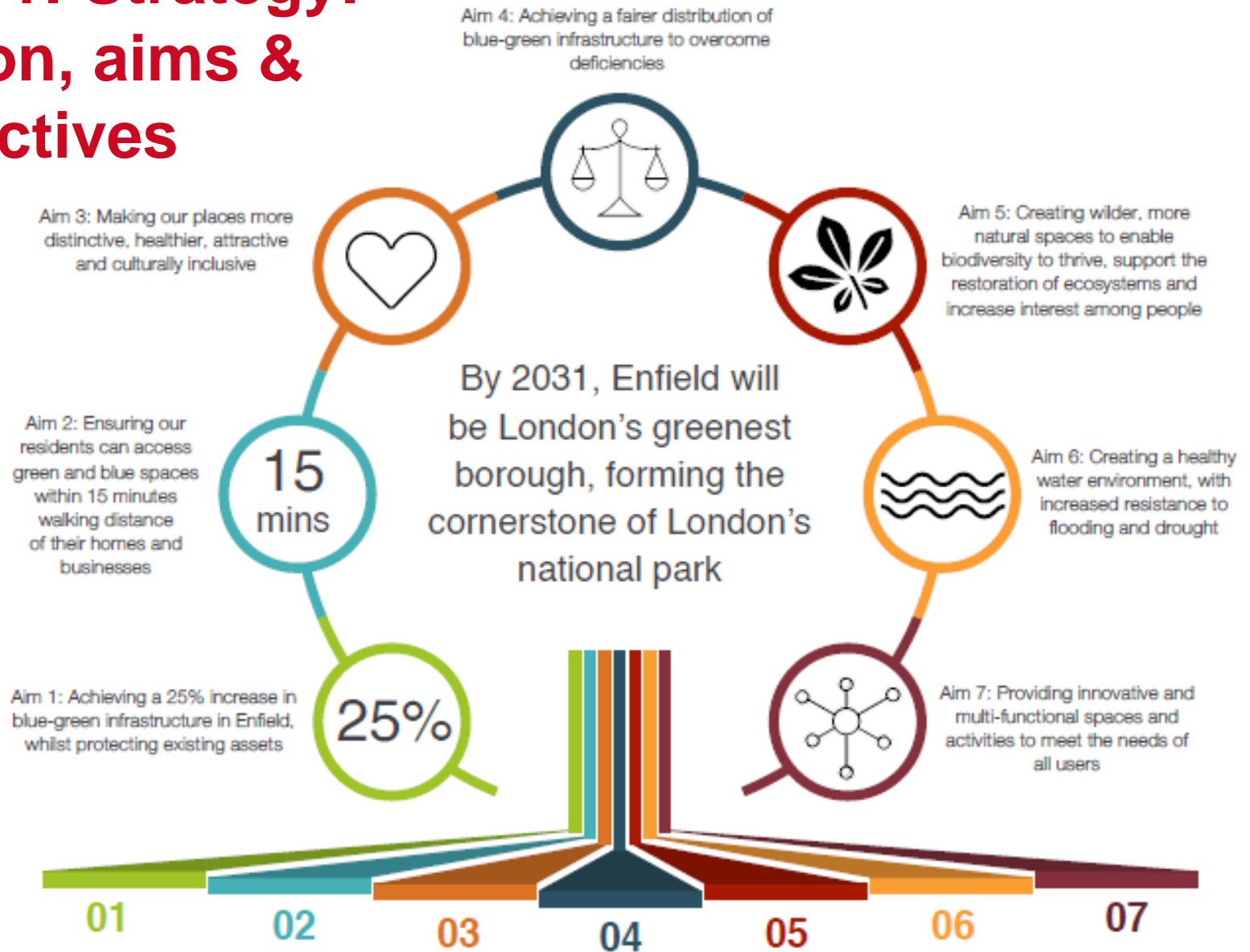






Figure 1: Shared vision and aims

Enfield's corridors, nodes, hubs & links

Key

-  Corridors of activity and movement
-  Strategic nodes
- 1. Enfield Town
- 2. Meridian Water
- 3. Ponders End waterfront
- 4. Crews Hill
- 5. Enfield Lock
- 6. Edmonton Green
- 7. Angel Edmonton
- 8. Ponders End/Albany Park
- 9. Firs Farm
- 10. Forty Hall
- 11. Whitewebbs Park
- 12. Broomfield Park
- 13. Grovelands Park
- 14. Trent Park

-  Urban green grids
-  Strategic links
-  Green Loop route
-  Enfield Chase proposed extent

Strategic programmes

-  Expansion of the borough's cycle & pedestrian network
-  Enfield Sports Village
-  Expansion of the open spaces and route network into the Lee Valley Regional Park
-  Green Loop
-  Enfield Chase restoration
-  Grey-to-green corridors
-  River & wetland restoration programme
-  Historic landscape restoration programme

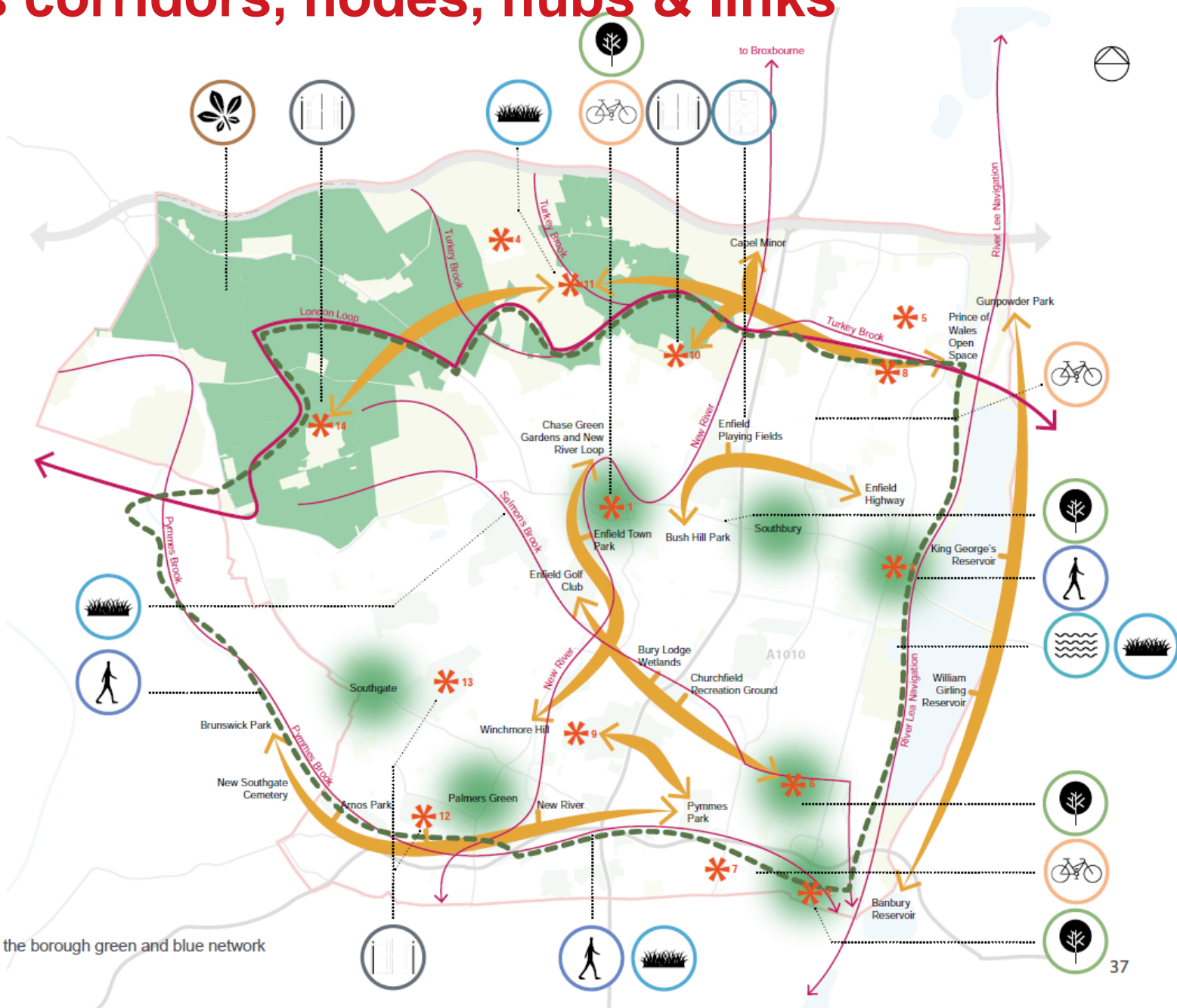
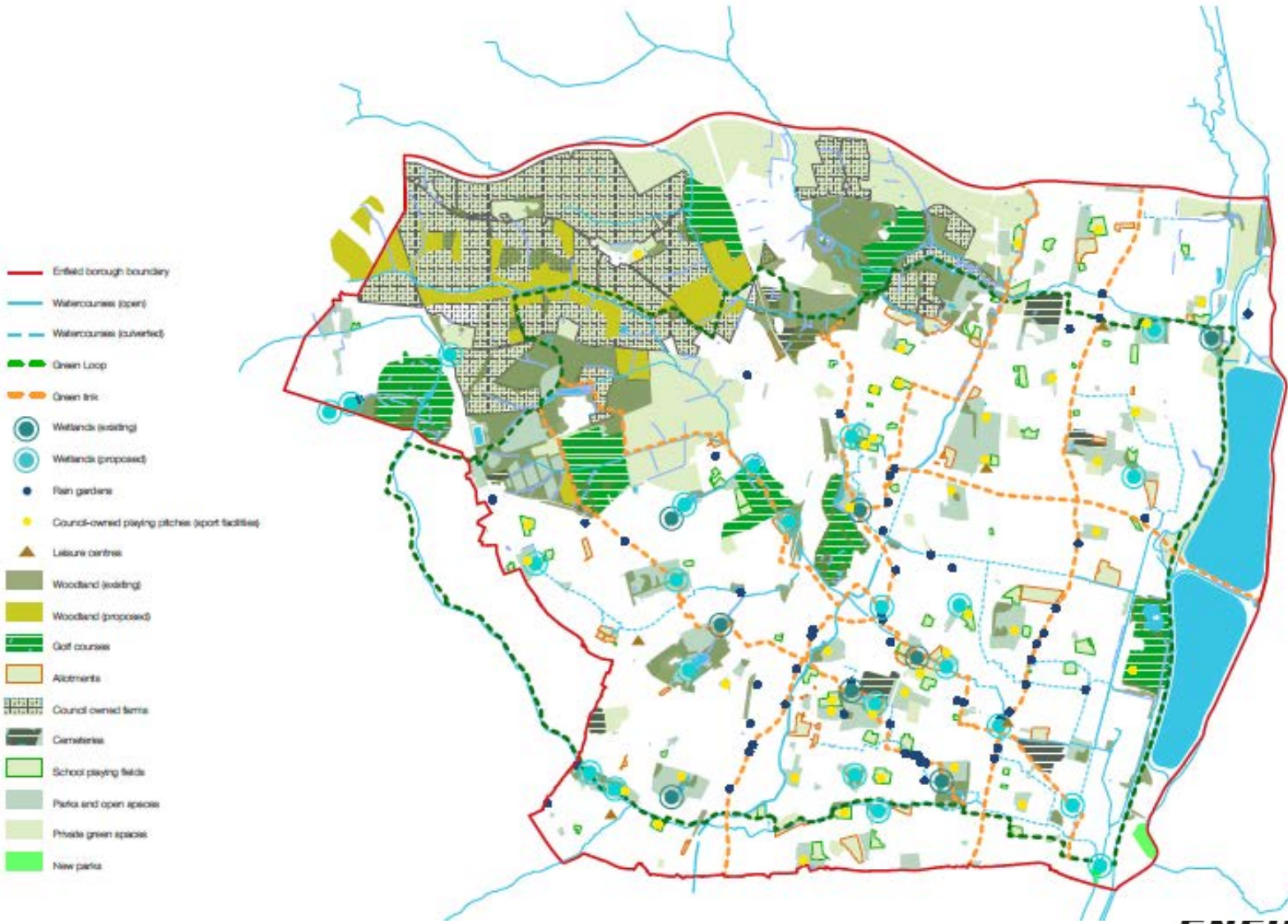


Figure 11: Components of the borough green and blue network

Strategic blue & green projects

8 landscape-scale projects to deliver a more integrated, multi-functional network:

- 1 Expansion of the borough's cycle and pedestrian network
- 2 Enfield Sports Village
- 3 Improved links to the Lee Valley Regional Park
- 4 Green Loop
- 5 Enfield Chase woodland restoration
- 6 Grey-to-green gateways
- 7 Wetland and river restoration programme
- 8 Historic landscape restoration programme





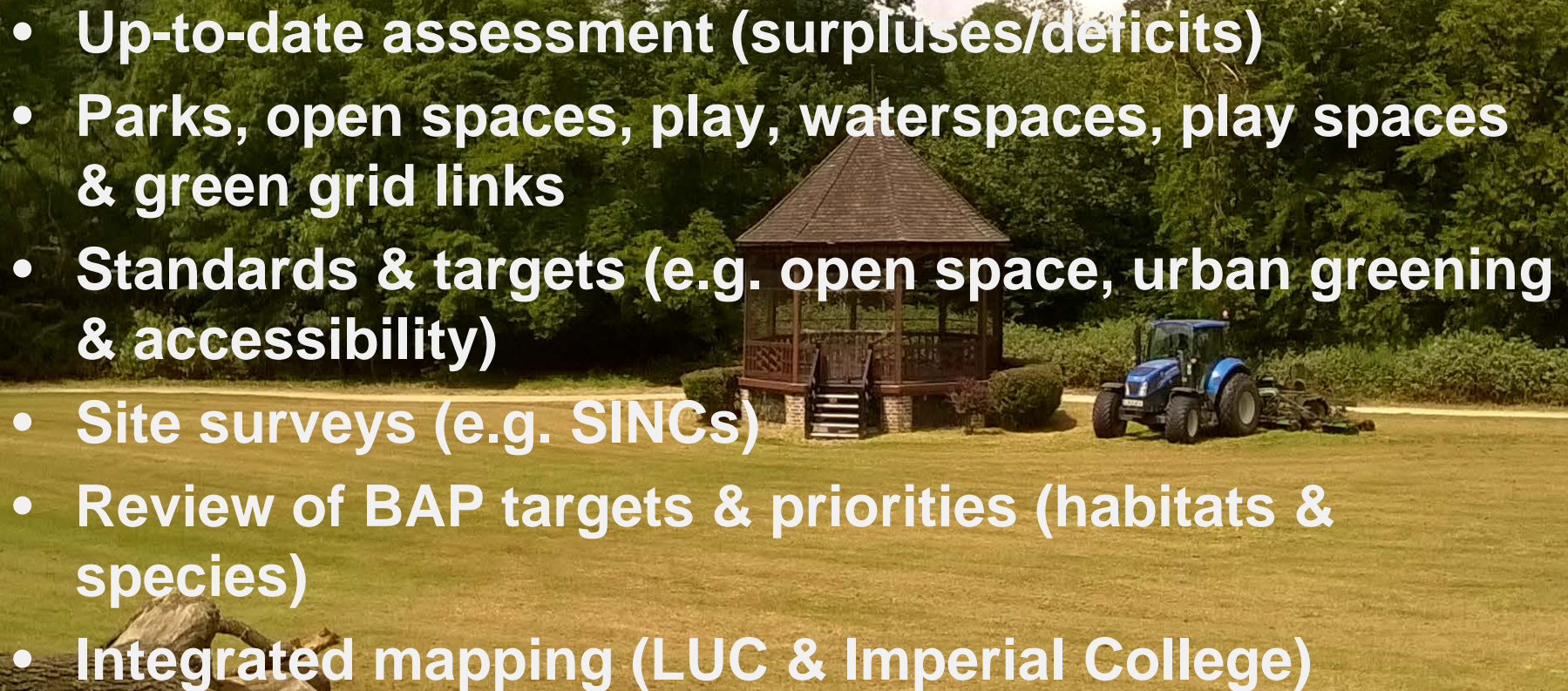
- Enfield borough boundary
- Watercourses (open)
- - - Watercourses (culverted)
- Parks and open spaces
- Site of metropolitan importance for nature conservation
- Site of borough importance for nature conservation
- Site of local importance for nature conservation
- Site of special scientific interest (Chingford Reservoir)
- Opportunities to extend sites of importance for nature conservation
- Potential sites of importance for nature conservation

Delivery & implementation

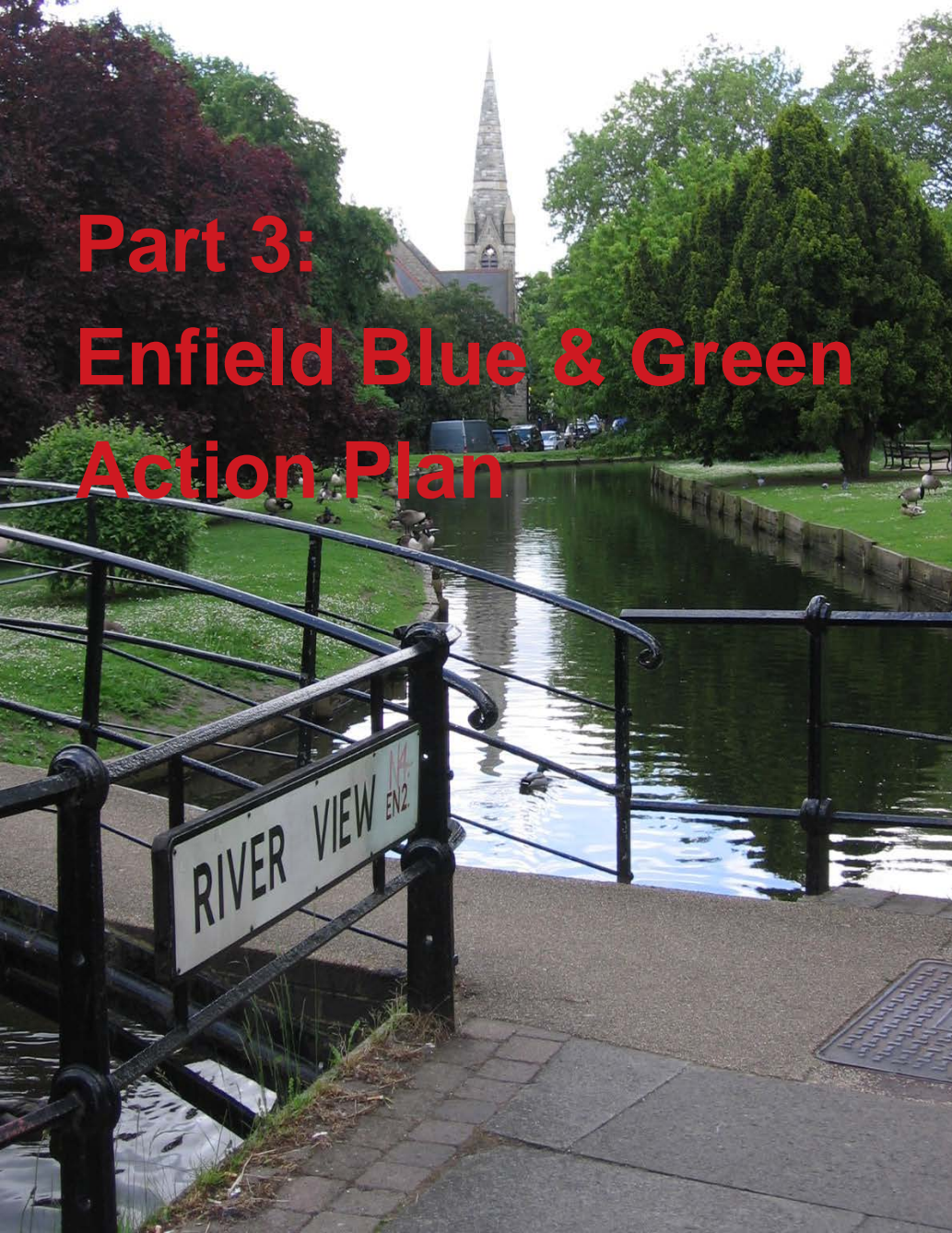


- **Enfield Blue & Green Partnership Board** (to be launched in the new year)
- **Enfield Blue & Green Infrastructure Map** – a live online tool of the network's assets, corridors, designations & proposed projects
- **Audit & action plan** (see parts 2 and 3 overleaf)
- **Infrastructure Delivery Plan** – a snapshot of priorities & projects, funding sources & gaps (regular updates)

Part 2: Audit of the borough's blue & green assets

- **Up-to-date assessment (surpluses/deficits)**
 - **Parks, open spaces, play, waterspaces, play spaces & green grid links**
 - **Standards & targets (e.g. open space, urban greening & accessibility)**
 - **Site surveys (e.g. SINCs)**
 - **Review of BAP targets & priorities (habitats & species)**
 - **Integrated mapping (LUC & Imperial College)**
- 
- A scenic landscape featuring a wooden gazebo with a stone base and a blue tractor parked on a grassy field. In the foreground, there is a large, weathered log. The background is filled with dense green trees under a bright, cloudy sky.

Part 3: Enfield Blue & Green Action Plan



- Parks & open spaces
- Sport, leisure & recreation
- Waterspaces
- Flood risk & water management
- Public realm
- Natural heritage
- Biodiversity
- Woodland & trees
- Active travel

Stage	How	Who	When
External consultation on the draft strategy	Workshops Surveys Bang the table	Engage with public bodies, local groups & charities	November - 2020 January 2021
Adoption	Cabinet / Full Council		Early 2021
Post adoption & review	Action plan		Late 2021